



TUTSHILL C OF E PRIMARY SCHOOL

'Love One Another, Know Ourselves, Believe and Grow'

END of YEAR NEWSLETTER – July 2024

Dear Parents and Carers,

We have yet again made it to the end of another school year. They really do get quicker year-on-year!

There has been so much happening this term, both in class and out! As ever, the children have enjoyed themselves, made the most of every opportunity and carried themselves well when off site on trips. Walking around the school this week it is clear to see that the children are ready for their summer break!

Over the year there have been many successes, too many to mention but I just wanted again thank staff pupils and parents for all they do to enable the school to operate! Without each part, it simply wouldn't work. Thank you for your support, feedback and loyalty towards the school. Our incredibly positive Ofsted report certainly saw what makes us so special!

Reception children graduated this week- they are officially ready for Year one! It was a lovely celebration, looking back at the children when they joined us and now ready to embark on another journey. Thank you to all that attended, and also to Mrs Spiller for delightful cake!

Year Six pupils have had a wonderful couple of weeks- residential, leavers events etc! I would just like to wish you all the very best as you come to the end of your primary education. You must be so proud of all that you have achieved- we certainly are! Enjoy secondary school and do not forget about us!

Earlier this week you will have received your child's annual report. It was a joy to read what the children have achieved throughout the year and the progress they made.

Mrs Beal will be leaving us at the end of August. After 24 years as our wonderful cleaner and 2 years prior to that working in the school kitchen, we really shall miss her! We wish her all the very best in her retirement- I gather there's lots of cuddles with her grandson to be had!

I would like to personally thank parents and children for the many kind words and gifts you've given me and 'bump', thank you- it means so much. It will be very strange not coming back to spend the year with you all, but I know that you are in exceptionally capable hands. Mrs Gomersall and Mrs Fryer will continue to look after you all! I have every intention of popping in throughout the year, especially to see the current Year Fives at the end of next year!

I wish you all a very relaxing summer holiday and we look forward to welcoming you back in September. To those that are moving on, I wish you all the very best- you absolutely deserve it!

Monday 2th September is an **INSET day**, staff will be receiving training on safeguarding, curriculum and assessment. We then look forward to welcoming the children back to school on **Tuesday 3th September**.

Thank you for all the support you have given the school this year- we look forward to even more success next year!

Miss Lane

Executive Headteacher



TUTSHILL C OF E PRIMARY SCHOOL

'Love One Another, Know Ourselves, Believe and Grow'



School drop-off in September 2024

Thank you to all parents that completed the survey for the opening arrangements for arriving at school.

There was an overwhelming preference for option 1- a better question system. With this in mind, during the summer holidays there will works completed to redesign the internal fencing to allow children and parents to queue off the pavement.

The gate by the school office will open at 8.35am and we ask that all parents use this top gate.

There will be no queuing at the bottom gate, as this is where the bottle neck is being reported. The bottom gate, by wall, will open at 8.40am. Please do not tie dogs/bikes etc to the school gates, especially where this causes congestion. Please do not smoke/vape when in the queue. Please remember that parents are, and have been for some time now, welcome on to the playground. Both gates will shut at 8.45am. Arrival after this will be through the School Office.

Please remember children are not to play on the apparatus before or after school, this includes siblings and children not at Tutshill School.

Please do remember that staff are still available to meet with parents, please arrange this through the School Office.

We are hopeful this new arrangement will remove children from the pavement, remove any congestions and provide a 10 min window for all children to be on site and gates shut at 8.45am.

Attendance in schools from September 2024 - Government guidance.

Please note there will be changes to the Attendance Policy from September 2024, the new policy will be available on the school website on Tuesday, 3 September.

https://tutshill.eschools.co.uk/web/welcome_to_our_policies_page/217010 . Attached is a letter from GCC outlining attendance changes.

For those requesting absence from school, may I remind parents that evidence is required to support your request. Any leave that is taken that has been unauthorised may result in a penalty notice. May I also remind parents that school starts at 8.45am and punctuality will be monitored.



School Communication

The school's communication strategy is attached below. School does not use WhatsApp, but PTA do. Should you want clarification on a school event, please first look at the school calendar on the school website before telephoning the School Office.

In Year 1-6 We have two platforms- eSchools and Seesaw and in Year R we have eSchools and Tapestry/SeeSaw.



TUTSHILL C OF E PRIMARY SCHOOL

'Love One Another, Know Ourselves, Believe and Grow'

Year	Platform	What it contains	
R	Tapestry	Childs learning diary against EYFS goals. This is a platform that will only share learning- no communication will come from Tapestry re school updates	
All school	eSchools	Email:	Newsletter regarding whole school events and school calendar. 3 x term- end of first week of term, mid-term and last week of term
		Text:	For last minute notifications that need to get to parents quickly- weather warnings, school closure etc.
All School	SeeSaw	Class SeeSaw is a learning platform that allows parents to see what is happening in their child's class. It allows class teachers to send updates and reminders that are solely relevant to that class.	

Parents should always contact the School Office to notify absence or medical appointments.



Parents are advised to speak with their class teacher should they have any questions regarding learning and/or behaviour. Please remember, you are able to speak with the teacher at the end of the day, on the playground and they are available to arrange a meeting for a mutually convenient time.

Should teachers want to discuss items of a personal matter with parents, e.g. behaviour, parents will receive a telephone call.

Please contact your class teacher in the first instance. Following this, should there be further involvement needed, this will become the attention of the phase leader. The Deputy Headteacher will become involved after this, with the Executive Headteacher involved at the end.

We respectfully ask that this process is followed and will direct parents to the process as this allows the school to deal effectively with parental communication.

Any communication that is sent to the school office will be sent to the correct member of staff.

 <p>Start of day Gates open at 8.35am Registration (official start of day) 8.45am Gate close at 8.45am</p> <p>End of the Day - Gates open 3.10pm Children collected from school yard (official end of day) 3.15pm Gates close 3.20pm</p>	 <p>We would just like to say a huge thank you to all of our School Council members. They have all done a fantastic job and have made many positive changes during this academic year. Many of the changes they have implemented will continue to flourish next year! Many Thanks you are amazing!</p>
---	--



TUTSHILL C OF E PRIMARY SCHOOL

'Love One Another, Know Ourselves, Believe and Grow'

School Uniform



Our school uniform remains unchanged and consists of:

- A light blue polo shirt*, shirt, or blouse
- School sweatshirt* or navy jumper or cardigan
- Smart grey trousers or grey skirt/pinafore (skirts should be of an appropriate length and style)
- Grey socks/tights
- Dark coloured appropriate sensible shoes.
- In summer, children may wear grey shorts/blue checked dress

PE Kit:

- Navy T-shirt* and navy shorts
- Navy jogging trousers/leggings and jumper/sweatshirt
- KS1 (Reception, Y1 and Y2) daps/black or white trainers; and
- KS2 (Y3, 4, 5 and 6) black or white trainers (no colour/logos/names).

*The school logo is embroidered on several items of uniform, all marked with an asterisk on the above list. The full range of school uniform (including items with the school logo) is available for purchase from 'Sheila's' in Sedbury. However, whilst preferred by the school, the wearing of uniform bearing the logo is **optional** and uniform can be purchased from other suppliers providing it is the correct colour (i.e. plain light blue polo shirts and plain navy sweatshirts may be worn for lessons and a plain navy t-shirt may be worn for PE).

Our uniform supplier, Sheila's of Beachley Road in Sedbury, has sent details of her current prices for Tutshill School uniform as follows:

- Sweatshirts £10.00 all sizes
- Sweat cardigans £12.00 all sizes
- Polo shirts £ 8.50 all sizes
- PE t-shirts £ 8.00 all sizes

ALL SCHOOL UNIFORM AND OTHER ITEMS OF CLOTHING MUST BE NAMED.



Summer Holiday Sports Club

The holiday sports club will be running from Monday 22 July – Thursday 8 August. The booking system is open and there are still spaces available.



TUTSHILL C OF E PRIMARY SCHOOL

'Love One Another, Know Ourselves, Believe and Grow'

Tutshill School Pupils Make a Difference: Homemade Soup for Street Life Charity

Our pupils have been busy cooking up a storm to support the local charity Street Life. Street Life is a Bristol based group who provide essential services to homeless individuals in need. Every Saturday evening, they serve soup, hot meals, drinks, sandwich packs, clothing and more at Brunswick Square in St Pauls. Their mission is to make a positive impact on the lives of those experiencing homelessness.

The Soup-Making Initiative

This year pupils from Year 6, Reception, and Year 2 have contributed to this wonderful cause. They have been creating delicious homemade vegetable soup. On the second Saturday of each month, Tutshill School donates approximately 12 litres of soup—both vegetable and chicken—to feed around 125 homeless people.

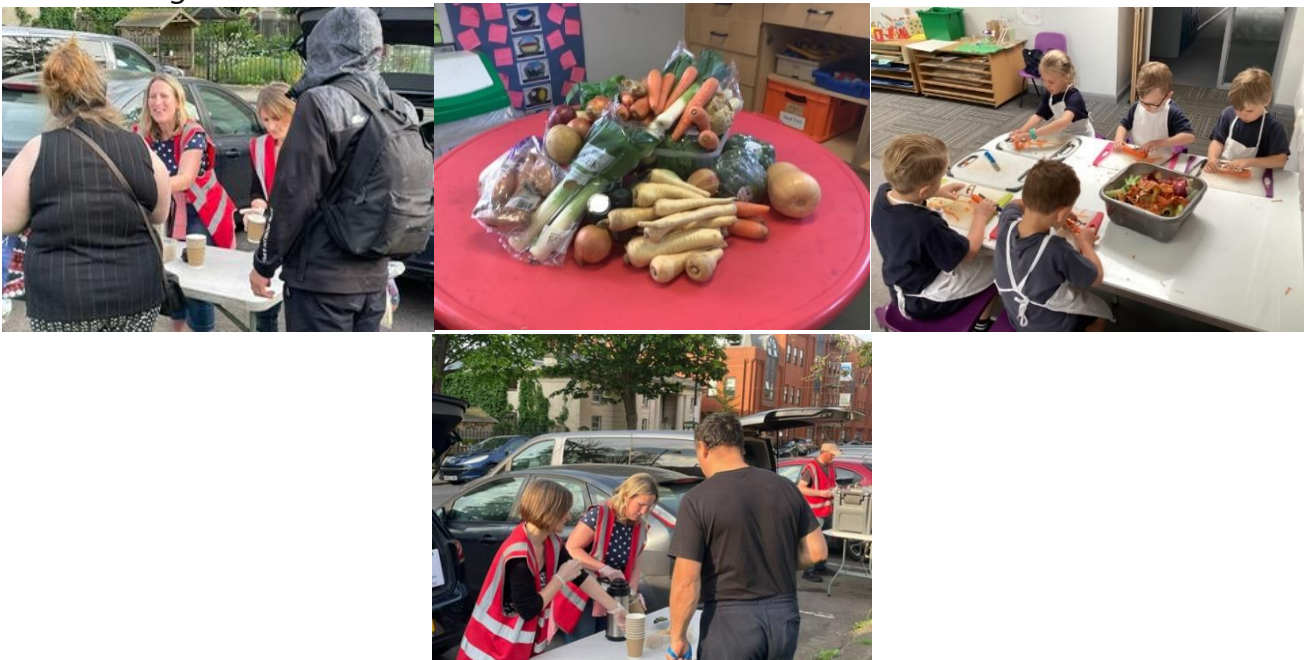
A Collaborative Effort

The success of this initiative wouldn't be possible without the incredible support of the kitchen staff who provide the equipment and parents who generously provide fresh vegetables. The children, with their enthusiasm and culinary skills, transform these ingredients into nourishing soup. Mrs. Spiller coordinates the cooking efforts, ensuring that everything runs smoothly.

Continuing the Tradition

As the next school year progresses, we plan to involve different classes. By continuing to provide soup and other essentials, we hope to make a lasting impact on the lives of those facing homelessness in Bristol.

A huge thank you to everyone involved. Together, we are sharing the Tutshill vision and values through small acts of kindness.





TUTSHILL C OF E PRIMARY SCHOOL

'Love One Another, Know Ourselves, Believe and Grow'



There is still time to join in with the library 'Summer Reading Challenge'. Please follow the link below to join in with all the reading fun:

<https://summerreadingchallenge.org.uk/>



Music Lessons

If you would like your child to take part in Piano or Flute Lessons next term, please contact Fiona Crawley via email on fiona.crawley@yahoo.co.uk to secure a place as places are limited.



Safeguarding children is a key priority at Tutshill C of E Primary School. We:

- ensure adults who come into contact with children have enhanced cleared from the Disclosure & Barring Service (which has replaced Criminal Records Bureau);
- communicate child protection procedures to all staff, parents and visitors. We would ask that should you hear, see or read anything which troubles you about a child, do not ignore it, but report your concerns to the Designated Safeguarding Lead, DSL: Miss J Lane
- For further information on safeguarding, contact the Gloucestershire Safeguarding Children's Board: www.gscb.org.uk. Tel: 01452 583638.

Safeguarding of pupils is everybody's responsibility. Should you have any concerns please report to the DSL

School Contact Details

Telephone: 01291 622593

Email: office@tutshillcofe.gloucs.sch.uk

Attendance: attendance@tutshillcofe.gloucs.sch.uk

PTA email: ptatutshill@gmail.com

Reminders



School meals: Please book school meals on ParentPay



TUTSHILL C OF E PRIMARY SCHOOL

'Love One Another, Know Ourselves, Believe and Grow'



MONTH	DATE	EVENT
Sept 2024	2	Inset Day
	3	Term Begins
	26	School Photos
Oct	3-4	Life Ed Visit
	28-1	Half Term
	25	Inset Day
Nov	4	Term Begins
	12	Flu Immunisations
Dec	20	Term Ends
	23-3	Christmas Holiday
Jan 2025	6	Term Begins





TUTSHILL C OF E PRIMARY SCHOOL

'Love One Another, Know Ourselves, Believe and Grow'

SCHOOL TERM AND HOLIDAY DATES SEPTEMBER 2024 – JULY 2025	
TERM 1	INSET DAY – Monday 2 September 2024 (no pupils onsite) Tuesday 3 September – Thursday 24 October 2024 INSET DAY – Friday 25 October 2024 (no pupils onsite)
Half Term Holiday	Monday 28 October – Friday 1 November 2024
TERM 2	Monday 4 November – Friday 20 December 2024
Christmas Holiday	Monday 23 December 2024 – Friday 3 January 2025
TERM 3	Monday 6 January 2025 – Friday 14 February 2025
Half Term Holiday	Monday 17 February – Friday 21 February 2025
TERM 4	INSET DAY – Monday 24 February 2025 (no pupils onsite) Tuesday 25 February – Friday 11 April 2025
Easter Holiday	Monday 14 April – Friday 25 April 2025
TERM 5	Monday 28 April – Friday 23 May 2025 BANK HOLIDAY – Monday 5 May 2025 (no pupils onsite)
Half Term Holiday	Monday 26 May – Friday 30 May 2025
TERM 6	INSET DAY – Monday 2 June 2025 (no pupils onsite) Tuesday 3 June – Friday 18 July 2025 INSET DAY – Monday 21 July 2025 (no pupils onsite)

School will be closed for in-service training on the following dates:

- Monday 2 September 2024
- Friday 25 October 2024
- Monday 24 February 2025
- Monday 2 June 2025
- Monday 21 July 2025



TUTSHILL C OF E PRIMARY SCHOOL

'Love One Another, Know Ourselves, Believe and Grow'

Community Breakfast Club



Sedbury Space
Every Wednesday
from 24 July to 28 August
9am - 11am



Forest of Dea
— DISTRICT COUNCIL —

Drop in for a FREE BREAKFAST

Got a question?
email communityengagement@2rh.org.uk
or call 0800 316 0897.

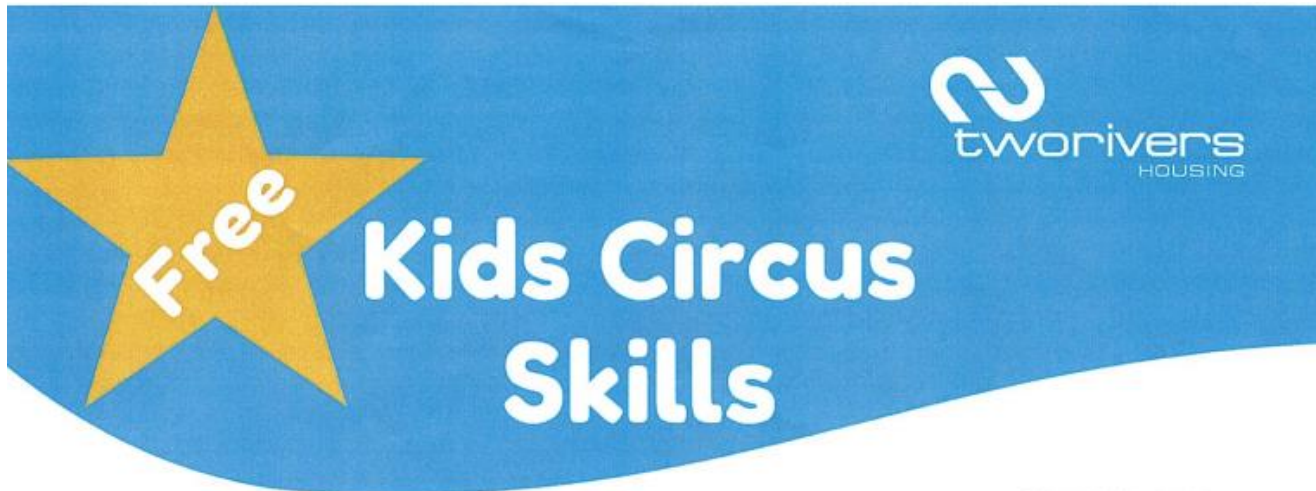
Children must be accompanied by an adult at all times.





TUTSHILL C OF E PRIMARY SCHOOL

'Love One Another, Know Ourselves, Believe and Grow'



**Sedbury Village Hall Field*
Tuesday 6 August 10am-12pm**

**Come along and join us for
some holiday fun!**



Includes a free kids packed lunch**

Scan the QR code to book your places
email communityengagement@2rh.org.uk
or call 0800 316 0897.



Children must be accompanied by an adult at all times.
***In the event of wet weather this will move into the hall**
****packed lunch subject to availability**





TUTSHILL C OF E PRIMARY SCHOOL

'Love One Another, Know Ourselves, Believe and Grow'



Free Summer Holiday Classes Available!

Whilst the weather may be trying to trick us otherwise, Summer holidays are nearly here and we know some of you might be slightly panicking about how to fill your child's time over the next 6 weeks!

Have no fear!

We are running all of our classes* as usual from 5th August onwards! This year we are opening up all of our classes for a whole summer of free trials! So there has never been a better time to give Taekwon-do with us a go!

Scan our QR to book in for your free trial!
We can't wait to see you over the Summer!



*Classes start at age 4, all abilities welcome.



CHEPSTOW
TAEKWON-DO
www.chepstowtkd.org.uk

Tom Baxter
07590847662



P.U.M.A.